

[REDACTED]

[REDACTED]

Frankfort, IN 46041

[REDACTED]

Live blood cell analysis (in phase contrast setting) to determine the hydration benefits of one quality of water versus a second type of water.

Types of water:

1. Wal-Mart Great Value Water purified by reverse osmosis and ozonation
2. Nestle Pure Life Water purified by reverse osmosis or distillation and enhanced with minerals
3. Wal-Mart water treated with device APSE-A for 5 minutes
4. Wal-Mart water treated with device APSE RI for 5 minutes
5. Nestle water treated with device APSE-A for 5 minutes
6. Nestle water treated with device APSE RI for 5 minutes

Subjects (patients) in the study will be a random sample in gender, age, and level of health.

Instructions for the patients:

Fast for 6 hours including all liquids prior to their appointment time.

Criteria for a patient to qualify for this study:

The patient's blood must have the presents of Rouleau. Rouleau reflects a loss of charge in the red blood cells causing the cells to stick and is a good indication of the patient level of hydration.

How the study will be conducted:

A blood sample will be taken and recorded on a DVD. The patient will then drink 4 ounces of either Wal-Mart or Nestle water treated with either device APSE-A or APSE RI and after 12 minutes a second blood draw will be taken and recorded on the DVD. Then the patient will drink 4 ounces of Wal-Mart or Nestle water not treated with either device and after 12 minutes a third blood draw will be taken and recorded on the DVD.

Chronic dehydration is the cause of numerous degenerative diseases including arthritis, colitis, angina, migraines, asthma and hypertension according to "Your Body's Many Cries for Water"

by F. Batmanghelidj M.D. This study will effectively show at the cellular level the ability of different water sources to hydrate the body. This study can therefore be very instrumental in providing a water source that is more effective in preventing many chronic diseases.

Results of enhanced hydration:

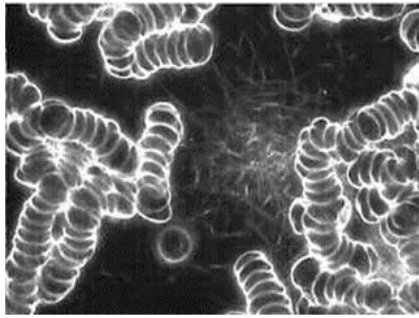
Six patients have been completed comparing Nestle Pure Life water with Nestle Pure Life treated for 5 minutes with device APSE-A. All of the patients had less sticky RBC (red blood cells) and more movement or flow after drinking the water treated with the device. Some had even better results at first after drinking the Nestle water but after a few minutes started to agglutinate again. Five patients have been completed comparing Wal-Mart Great Value water with Wal-Mart Great Value water treated for 5 minutes with device APSE RI. All but one patient had less sticky RBC. Five patients are completed comparing Nestle water treated with device APSE RI with Nestle water. All but one had less sticky RBC after drinking the water treated with the device and two became more sticky after drinking the water that was not treated with the device. All of the patients in the group comparing Wal Mart water treated with device APSE-A with untreated Wal Mart water had less sticky blood. Also four patients had stickier blood after drinking the untreated water. Each patient is rated on a scale of 0 to 5. 0 being no rouleau (sticky RBC) and 5 severe rouleau and also 0 to 5 on movement or flow with 0 being no movement and 5 flowing rapidly. The results are as follows:

<u>patient #</u>	<u>before drinking any water</u>		<u>Nestle water treated with APSE-A</u>		<u>untreated Nestle water</u>	
20	rouleau 2	flow 1	R 1	F 3	R 1.5	F 2
21	R 5	F 0.5	R 2	F 1	R 3	F 3
22	R 5	F 0	R 2 (broke up to 1)	F 3	R2 (broke down to 3)	F3
23	R 4	F 3	R 4 (broke up to 1.5)	F 4	R 4 (broke down to 5)	F3
24	R 3	F 1	R 1.5 (broke up to 0.5)	F3	R 0	F3
25	R 5	F 2	R 4 (broke up to 0.5)	F2	R 0.5	F3

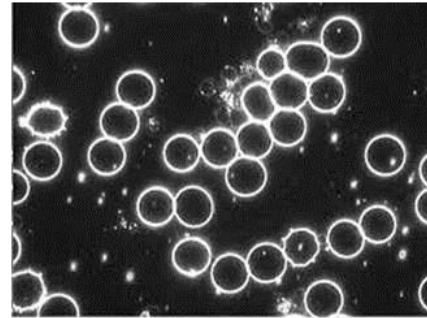
<u>patient #</u>	<u>before drinking any water</u>		<u>Wal Mart water treated with APSE RI</u>		<u>untreated Wal Mart water</u>	
29	R 3	F 2	R 0.5	F 3	R 1 (broke down to 4)	F 1
30	R 2	F 2	R 1	F 3	R 0.5	F 1
31	R 2	F 2	R 1.5	F 3	R 0	F 3
32	R 3	F 2	R 4	F 3	R 5	F 2
33	R 5	F 3	R 0	F 1.5	R 1	F 3

<u>patient #</u>	<u>before drinking any water</u>		<u>Nestle water treated with APSE RI</u>		<u>untreated Nestle water</u>	
34	R 5	F 1	R 4.5	F 2	R 4.5	F 3
35	R 3	F 3	R 0.5	F 3	R 0.5	F 3
36	R 3	F 4	R 0	F 1	R 3	F 2
37	R 2	F 2	R 1.5	F 2	R 1	F 3
38	R 2	F 2	R 3.5	F 3	R 3.5(broke down to 5)	F 2

<u>patient #</u>	<u>before drinking any water</u>		<u>Wal Mart water treated with APSE-A</u>		<u>untreated Wal Mart water</u>	
39	R 4	F 0.5	R 1	F 3	R 0	F 1
40	R 1	F 3	R 0	F 1	R 3(broke down to 4)	F 1
41	R 3.5	F 3	R 0.5	F 3	R 2	F 1
42	R 3	F 2	R 2	F 3	R 3.5	F 3
43	R 3	F 2	R 0.5	F 2	R 3	F 2



Before APSE



After APSE

Additional notes:

Only two patients (#32 and #38) had more rouleau after drinking water that had been treated with device APSE RI and none had more rouleau after drinking water treated with device APSE-A. It is interesting that both patients did have increase in the flow after drinking the device treated water and less flow after drinking untreated water. Another point of interest is that these two patients are related and indicated that they frequently have the opposite reaction to medications than what is listed as a possible side effect (ex. label states the drug may cause drowsiness but causes them to be hyper active)

pH of urine:

2 hours after a breakfast of oatmeal with apples and 24 oz. of water treated with device APSE-A pH 7.0

2 hours after a breakfast of oatmeal with apples and 24 oz. of drinking water not treated with the device pH 5.74

Oxidation test:

I currently have 4 patients using device APSE-A in all of their drinking water and 3 patients using device APSE RI in all of their drinking water. All of these patients displayed a significant amount of free radical damage to their red blood cells. After drinking the treated water for 6 weeks I will take another blood sample to see if water treated with the devices has antioxidant capacity. This part of the study should be completed by Dec.6th.

I have one antidotal report. This patient after using the device for 11 days has lost 8 pounds, a chronic dry spot on one foot has gone away, the chronic inflammation in her eye lids is gone and she has started to perspire when she normally does not.

Submitted by [REDACTED]
Certified in Clinical Microscopy and Blood Cell Analysis in Biological Medicine